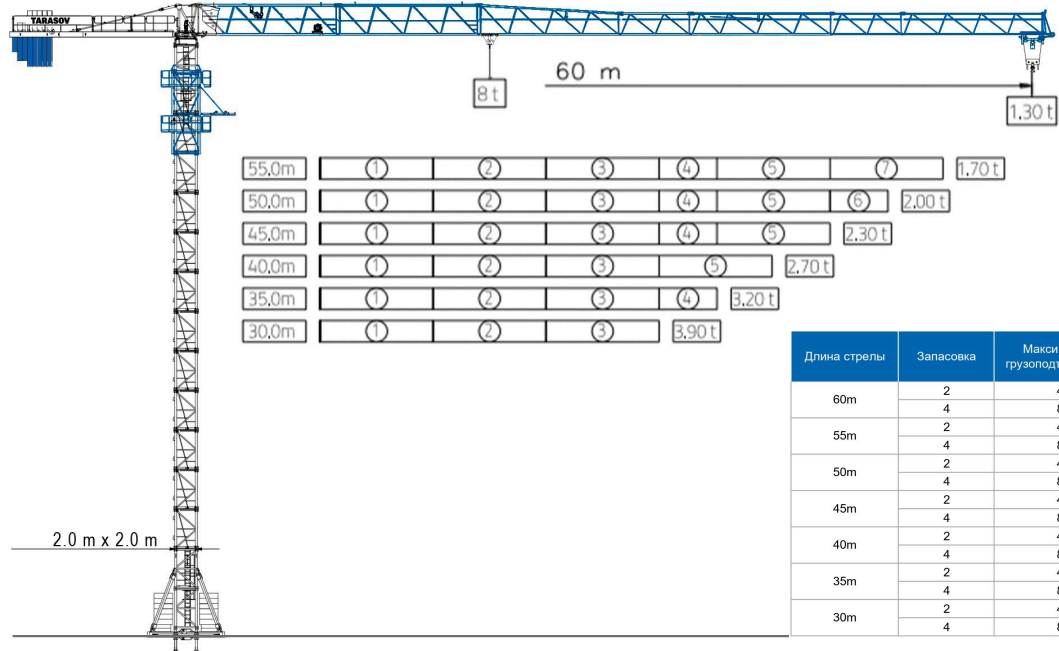


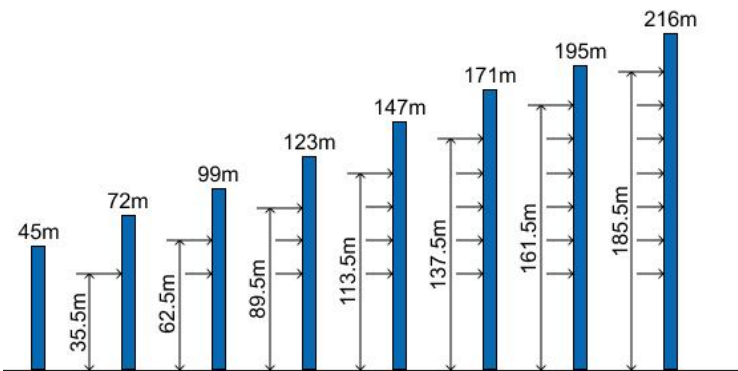
TARASOV

info@trsv.tech





Длина стрелы	Запасовка	Максимальная грузоподъемность (t)	(m)	15.0	20.0	22.5	25.0	27.5	30.0	32.5	35.0	37.5	40.0	42.5	45.0	47.5	50.0	52.5	55.0	57.5	60.0
60m	2	4.0	26.14	4.00	4.00	4.00	4.00	3.76	3.37	3.05	2.77	2.54	2.33	2.15	1.98	1.84	1.71	1.59	1.49	1.39	1.30
	4	8.0	14.47	7.67	5.45	4.72	4.15	3.69	3.30	2.98	2.70	2.46	2.25	2.07	1.91	1.77	1.64	1.52	1.41	1.31	1.23
55m	2	4.0	28.60	4.00	4.00	4.00	4.00	4.00	3.77	3.42	3.11	2.85	2.63	2.42	2.25	2.09	1.95	1.82	1.70		
	4	8.0	15.79	8.00	6.06	5.26	4.63	4.12	3.70	3.34	3.04	2.78	2.55	2.35	2.17	2.01	1.87	1.74	1.63		
50m	2	4.0	29.17	4.00	4.00	4.00	4.00	4.00	3.87	3.50	3.19	2.93	2.69	2.49	2.31	2.15	2.00				
	4	8.0	16.09	8.00	6.20	5.39	4.74	4.22	3.79	3.43	3.12	2.85	2.62	2.42	2.23	2.07	1.93				
45m	2	4.0	29.10	4.00	4.00	4.00	4.00	4.00	3.85	3.49	3.18	2.92	2.69	2.48	2.30						
	4	8.0	16.06	8.00	6.18	5.37	4.73	4.21	3.78	3.42	3.11	2.84	2.61	2.41	2.23						
40m	2	4.0	29.22	4.00	4.00	4.00	4.00	4.00	3.87	3.51	3.20	2.93	2.70								
	4	8.0	16.12	8.00	6.21	5.40	4.75	4.23	3.80	3.44	3.13	2.86	2.63								
35m	2	4.0	29.67	4.00	4.00	4.00	4.00	4.00	3.87	3.51	3.20										
	4	8.0	16.12	8.00	6.21	5.40	4.75	4.23	3.80	3.44	3.13										
30m	2	4.0	29.55	4.00	4.00	4.00	4.00	4.00	3.85												
	4	8.0	16.06	8.00	6.18	5.37	4.73	4.21	3.78												



		2к запасовка		4к запасовка		kW	
Подъем	H30FC20-440(A)	t	1	4	2	8	30
		m/min	100	40	50	20	
Поворот	S40CA-100LA10/12A	r/min	0-0.8				2 x 4.0
	S40CN-100LA10/12A						
Перемещение	T40FC65-b	m/min	0-100				4.0
Передвижение	ZA52-D	m/min	0-25				2 x 5.2
	B52-D						
Основной источник питания	380 V (±10%) 50Hz	42 + 5.2x2 kW (excluding travelling and climbing)					