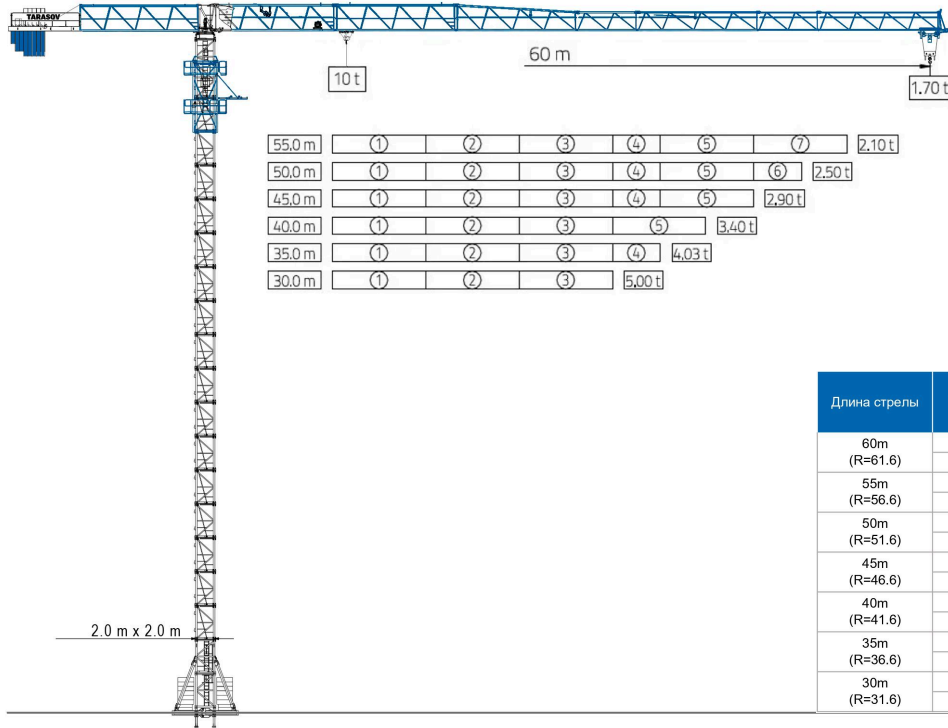


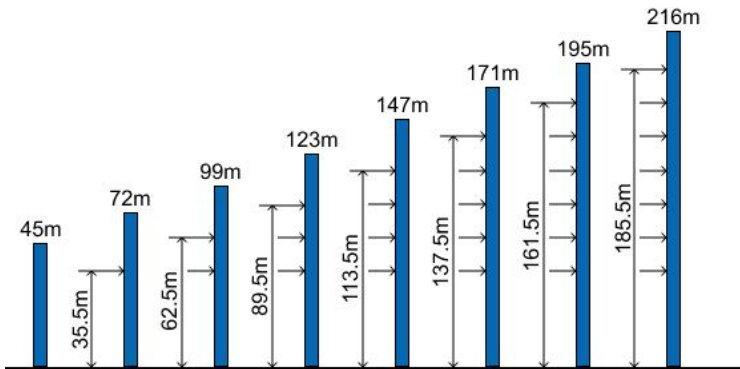
TARASOV

info@trsv.tech





Длина стрелы	Запасовка	Максимальная грузоподъемность м / t	20.0	22.5	25.0	27.5	30.0	32.5	35.0	37.5	40.0	42.5	45.0	47.5	50.0	52.5	55.0	57.5	60.0
60m (R=61.6)	2	2.5 ~ 25.7/5.0		5.00		4.61	4.16	3.78	3.45	3.17	2.92	2.71	2.52	2.34	2.19	2.05	1.92	1.81	1.70
	4	2.5 ~ 13.8/10.0	6.58	5.74	5.08	4.53	4.08	3.70	3.37	3.09	2.85	2.63	2.44	2.26	2.11	1.97	1.84	1.73	1.62
55m (R=56.6)	2	2.5 ~ 27.4/5.0		5.00		4.97	4.49	4.08	3.73	3.43	3.17	2.94	2.73	2.55	2.38	2.24	2.10		
	4	2.5 ~ 14.7/10.0	7.08	6.19	5.47	4.89	4.41	4.00	3.66	3.35	3.09	2.86	2.65	2.47	2.31	2.16	2.02		
50m (R=51.6)	2	2.5 ~ 28.4/5.0		5.00			4.68	4.26	3.90	3.59	3.31	3.07	2.86	2.67	2.50				
	4	2.5 ~ 15.3/10.0	7.37	6.44	5.71	5.10	4.60	4.18	3.82	3.51	3.24	3.00	2.78	2.59	2.42				
45m (R=46.6)	2	2.5 ~ 28.7/5.0		5.00			4.74	4.31	3.95	3.63	3.36	3.12	2.90						
	4	2.5 ~ 15.4/10.0	7.46	6.52	5.78	5.17	4.66	4.23	3.87	3.55	3.28	3.04	2.82						
40m (R=41.6)	2	2.5 ~ 28.9/5.0		5.00			4.80	4.37	4.00	3.68	3.40								
	4	2.5 ~ 15.6/10.0	7.55	6.60	5.84	5.23	4.72	4.29	3.92	3.60	3.32								
35m (R=36.6)	2	2.5 ~ 29.1/5.0		5.00			4.82	4.39	4.02										
	4	2.5 ~ 15.6/10.0	7.59	6.63	5.88	5.26	4.74	4.31	3.94										
30m (R=31.6)	2	2.5 ~ 30.0/5.0		5.00															
	4	2.5 ~ 16.1/10.0	7.85	6.87	6.09	5.45	4.92												



Подъем	H30FP20-430P	t	2к запасовка		4к запасовка		kW
			1	4	2	8	
Подъем	H37FP25-530P	m/min	100	40	50	20	30
		t	1.25	5	2.5	10	37
Поворот	S40CA-100LA10/12A	r/min	0-0.8				2 x 4.0
	S40CN-100LA10/12A						
Перемещение	T40FC65-b	m/min	0-100				4.0
	T55FC70-b		0-100				5.5
Передвижение	ZA52-D	m/min	0-25				2 x 5.2
	B52-D						
Основной источник питания	380 V (±10%) 50Hz	H30FP20-430P	42.0 kW (excluding travelling and climbing)				
	380 V (±10%) 60Hz						
	415 V (±10%) 50Hz	H37FP25-530PB	50.5 kW (excluding travelling and climbing)				
	440 V (±10%) 60Hz						